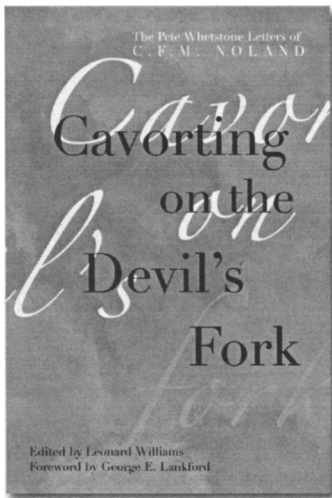


## Information about Contributors

**Joanna Bosse**, Assistant Professor of Ethnomusicology at Bowdoin College, earned her Ph.D. from the University of Illinois at Urbana-Champaign in 2004. She has conducted ethnographic research on the popularity of Latin dance genres including salsa, rumba, and tango among non-Latinos living in the Midwest United States. In 2001 the Society for Ethnomusicology awarded her the Nahumck Award for Dance Research. She is currently working on a book manuscript on American ballroom dance.

**Emanuela Guano** is Associate Professor of Anthropology at Georgia State University. In her writings on Buenos Aires, she examined the impact of neoliberalism on the cityscape and the urban experience, the interplay of class and race representations in the social production of space, and the spatialization of political discourse. Her current project is an ethnography of the economy of culture in postindustrial Genoa.

**José E. Limón** is the Mody C. Boatright Regents Professor of American and English Literature and Professor of Anthropology at the University of Texas at Austin, where he also directs the Center for Mexican-American Studies.



## **Cavorting on the Devil's Fork**

*The Pete Whetstone Letters of*

*C. F. M. Noland*

Edited by Leonard Williams

With an Introduction by George E. Lankford

*One of the earliest masters of southern humor*

Noland's semiautobiographical "Letters" were built around the experiences of Pete Whetstone, who, along with his neighbors, devoted himself to hunting, fishing, and an outdoors lifestyle. His pieces were published regularly in New York's *Spirit of the Times*, and he quickly achieved a reputation as one of the southwest's best humorists. His tall tales told in dialect reflected the peculiar characteristics of the people of a backwoods region.

\$19.95 paper

The University of Arkansas Press

800-626-0090 • [www.uapress.com](http://www.uapress.com)

## **New Books from TEXAS A&M**

### **LIFE ALONG THE BORDER**

*A Landmark Tejana Thesis*

JOVITA GONZÁLEZ

EDITED, WITH AN INTRODUCTION, BY MARÍA EUGENIA COTERA

This 1929 master's thesis of famed folklorist González explores the tense relations between Anglos and Mexicans after the U.S.-Mexico War and de-emphasizes the role of the Texas Revolution in Texas history. \$35.00 cloth; \$17.95 paper

### **THE LEGACY OF AMÉRIGO PAREDES**

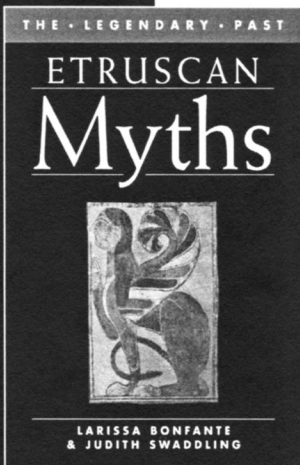
JOSÉ LÓPEZ MORÍN

Morín shows how Mexican literary traditions influenced the life and work of this influential scholar of folklore and anthropology. He surveys Paredes's work, with emphasis on *With a Pistol in His Hand*. \$40.00 cloth; \$19.95 paper

**TEXAS A&M UNIVERSITY PRESS**

College Station, Texas • Orders: 800-826-8911 • Fax: 888-617-2421

[www.tamu.edu/upress](http://www.tamu.edu/upress)



**ETRUSCAN MYTHS**  
BY LARISSA BONFANTE  
AND JUDITH SWADDLING

*Etruscan Myths*, the newest volume in the popular *Legendary Past* series, serves as an excellent introduction to the world of the Etruscans and their mythology and is plentifully illustrated from the vast collection of the British Museum and other international museums.

*The Legendary Past*  
\$14.95 paper



*Read more about this book online.*

**UNIVERSITY OF TEXAS PRESS**  
800.252.3206 WWW.UTEXASPRESS.COM

Maria Tatar



Secrets beyond the Door  
THE STORY OF BLUEBEARD AND HIS WIVES

Paper \$17.95 0-691-12783-2

New in paperback

## Secrets beyond the Door

The Story of Bluebeard and His Wives

**MARIA TATAR**

In this fascinating work, Maria Tatar analyzes the many forms the tale of Bluebeard's wife has assumed over time, particularly in Anglo-European popular culture. It documents the fortunes of Bluebeard, his wife, and their marriage in folklore, fiction, film, and opera, showing how others took the Bluebeard theme and revived it with their own signature twists.

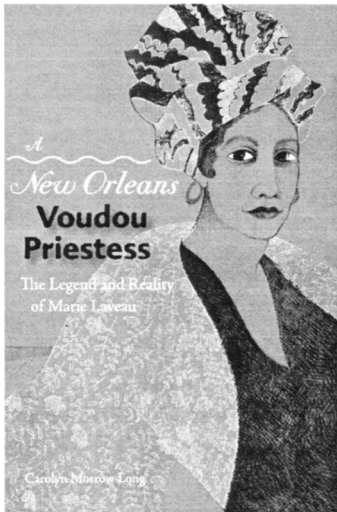
"*Secrets beyond the Door* is full of transmutations and sublimations. Harvard professor Maria Tatar . . . returns with a scintillating account of what generations of high and low culture have done to the Bluebeard folktale."

—John Leonard, *Harper's*

"A book that unlocks the reasons of transgression in the chambers of the mind."—Alex Moore, *ForeWord Magazine*

## Princeton University Press

800-777-4726 ■ Read excerpts at [www.pup.princeton.edu](http://www.pup.princeton.edu)



## A New Orleans Voodoo Priestess

*The Legend and Reality of Marie Laveau*

Carolyn Morrow Long

"The legend of Marie Laveau, New Orleans' Voodoo Queen, has a compelling hold on the popular imagination. Carolyn Morrow Long uncovers the fascinating story of the flesh-and-blood woman behind the legend and in so doing enriches our understanding of life in New Orleans in the nineteenth century."—Vaughan B. Baker, University of Louisiana, Lafayette

Cloth \$34.95

## Cracker

*The Cracker Culture in Florida History*

Dana Ste. Claire

Part history, part folklore, *Cracker* offers a picture of the real Cracker culture in the backwoods of Florida.

Paper \$19.95



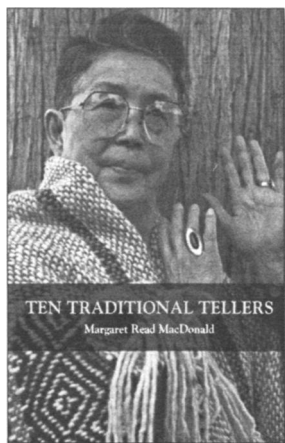
Discover the World with Florida Books

University Press of Florida

Gainesville, Tallahassee, Tampa, Boca Raton, Pensacola,  
Orlando, Miami, Jacksonville, Fort Myers

[www.upf.com](http://www.upf.com)

Visit our website for special deals and great new history titles or order toll free 1-800-226-3822.

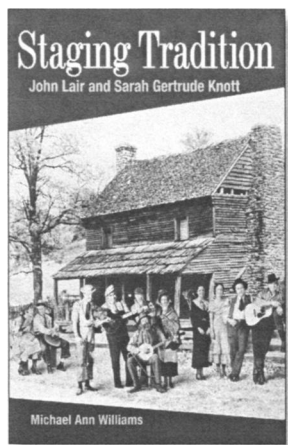


## Ten Traditional Tellers

MARGARET READ MacDONALD

This unique collection of stories and personal interviews offers an intimate look at the lives and art of these tellers. Also includes brief introductions for each teller and one or two of their representative stories.

Cloth \$50.00; Paper \$20.00



## Staging Tradition

John Lair and Sarah Gertrude Knott

MICHAEL ANN WILLIAMS

Using extensive archival research and oral histories, Williams traces the parallel careers of the creators of the Renfro Valley Barn Dance and the National Folk Festival.

*Music in American Life*

Illus. Cloth \$60.00; Paper \$20.00

## The Bluegrass Reader

Edited by THOMAS GOLDSMITH

“Successfully manages to appeal to both the bluegrass insider and the newcomer to the genre, and in the process has given well-deserved new life to some masterful bits of writing.”

—*Bluegrass Unlimited*

*Music in American Life*

New in Paper, \$21.95

## Tin Men

ARCHIE GREEN

Labor folklorist Archie Green links tinsmith artistry to issues of craft education, union traditions, labor history, and social class. Enhanced by numerous illustrations, the volume also includes an inventory of the tin men located in sheet metal shops, galleries, and museums.

*Folklore and Society*

Illus. New in Paper \$20.00

## Information for Contributors

*Journal of American Folklore*, the quarterly journal of the American Folklore Society since the society's founding in 1888, publishes scholarly articles, essays, notes, and commentaries directed to a wide audience, as well as separate sections devoted to reviews of books, exhibitions and events, sound recordings, films and videotapes, and obituaries. The contents of the journal reflect a wide range of professional concerns and theoretical orientations. Articles present significant research findings and theoretical analyses from folklore and related fields. Essays are interpretive, speculative, or polemic. Notes are narrower in scope and focus on a single, often provocative, issue of definition, interpretation, or amplification. "Commentaries," included in the "Dialogues" section, address topics raised in earlier articles. The views expressed in the journal are those of the authors and do not necessarily reflect those of the society or its officers.

Article manuscripts are acknowledged on receipt and are evaluated first by the *JAF* editorial staff, and then, if appropriate for the journal, unidentified manuscripts are sent to two qualified anonymous referees for review. The staff attempts to keep authors informed about the progress of the review process via email. The review process may take only a few weeks but sometimes takes several months. Authors are notified as soon as a decision has been made to accept or reject a manuscript; rejection may be outright or with the possibility of revision and resubmission for a new evaluation. The editors reserve the right to reject or return for revision any material submitted, on the grounds of inappropriate subject matter, quality, or length. When a manuscript is submitted to the *Journal of American Folklore*, it should not have been published elsewhere or be under consideration by any other journal.

Reviews and review articles are generally requested by the review editors, but the editors welcome queries from scholars concerned with particular areas of folklore research and expressions of willingness to review from scholars with particular expertise. Colleagues who wish to write an obituary should address the editors. Each article-length manuscript must begin with a 50- to 75-word abstract that summarizes the essential points and findings of the article. Current and accurate e-mail addresses, whenever available, are essential for the review process to proceed quickly.

Authors wishing to have an article manuscript considered for publication should submit two versions of their manuscript to the editors. The first version of the manuscript should be identified by the author's name throughout, including references cited, etc. The second version must be submitted without any identification of the author. This means that the second version should include no title page and no name on each page; all references to the author or to the author's work anywhere in the manuscript (including the notes, captions, and references cited) must be removed when they serve to identify the author. Deleted materials can be "marked" in the following manner to indicate words missing: (\*\*\*\*). Authors should also be sure that they are not identified in the electronic file's properties, which in many versions of Word can be accessed by selecting "properties" under the file menu and clicking on the summary tab.

All manuscripts must be submitted via both electronic mail and paper mail. First, the two versions of the manuscript should be sent as e-mail attachments to the editors at [jafolklore@tamu.edu](mailto:jafolklore@tamu.edu). Both versions should be in Microsoft Word format. (If the files total more than 5 megabytes in size, please contact the editors before sending the files.) Second, authors must send via paper mail a CD with the two versions of the Word files. Please do not send postage or a fee for submission. Hard copies of the manuscript are not required. Articles in *JAF* may include figures, such as photos, tables, line drawings, or musical transcriptions. Figures must not be embedded in the Word files. Instead, the manuscript should contain "call outs" to the figures (for example, "<insert Figure 1 about here>"), and a list of figure captions should follow the Works Cited section of the manuscript. Each figure should be submitted as a separate electronic file or hard copy. Electronic files of the figures may be e-mailed to the editors, as long as the total size of all files sent does not exceed 5 megabytes. Otherwise, the electronic copies of the figures should be included on the CD sent by paper mail. If figures exist only in hard copy, they should be sent in the paper mail package. Electronic copies of photos must be at a resolution of 300 DPI or higher, and the JPG format is not accepted. For complete information on figure formatting and permissions, please contact the editors. If an article is accepted for publication in *JAF*, the author is responsible for providing the *JAF* staff with a clean, corrected copy of the manuscript in Word format.

The *Journal of American Folklore* generally follows the 14th edition of *The Chicago Manual of Style* (Chicago: University of Chicago Press, 1993). Close examination of the most current issue of *JAF* provides a helpful model for correct *JAF* style and form. For spelling, refer to *Webster's Third New International Dictionary* (1986) or the latest edition of its abridgment, *Merriam-Webster's Collegiate Dictionary*. If two or more spellings are given, use the first. In all quotations from printed text, the actual spelling in the original is used. Authors should avoid unnecessary use of gender-exclusive language.



0021-8715(200724)120:1;1-6